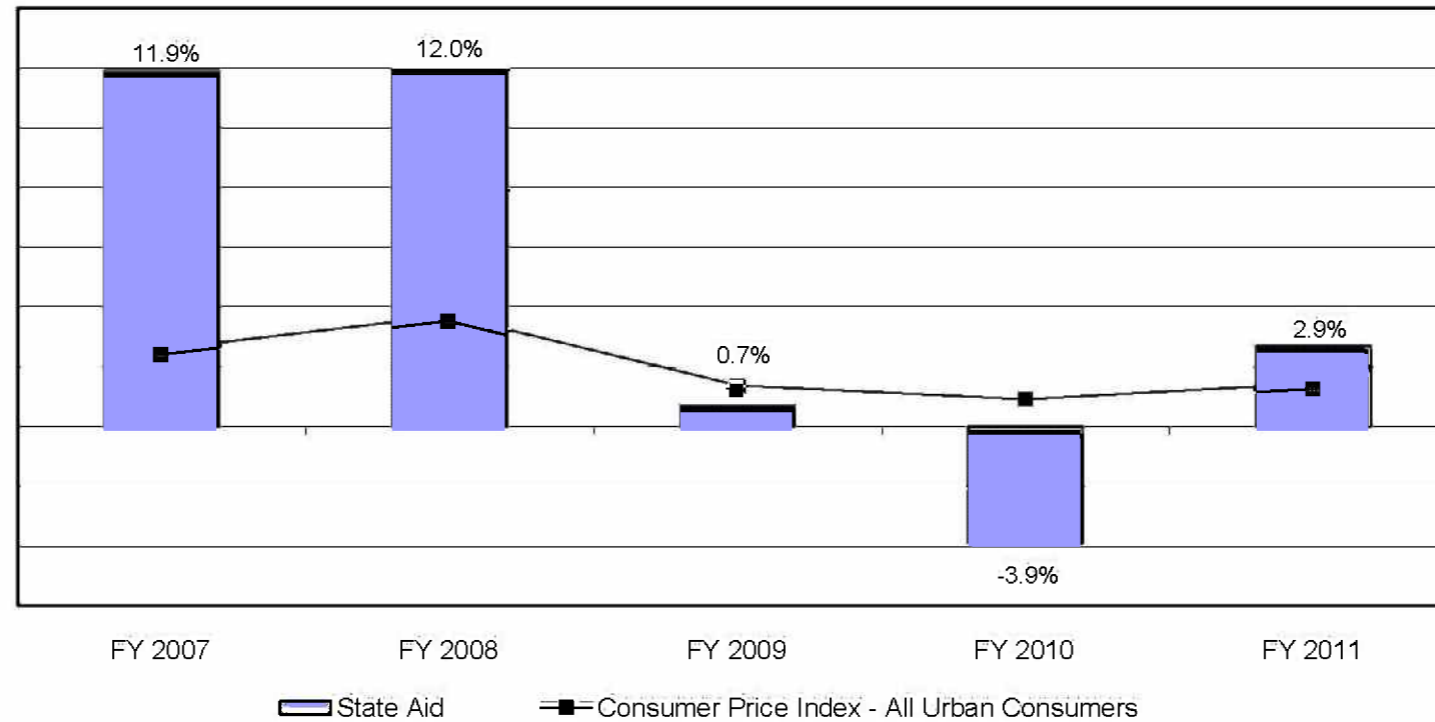


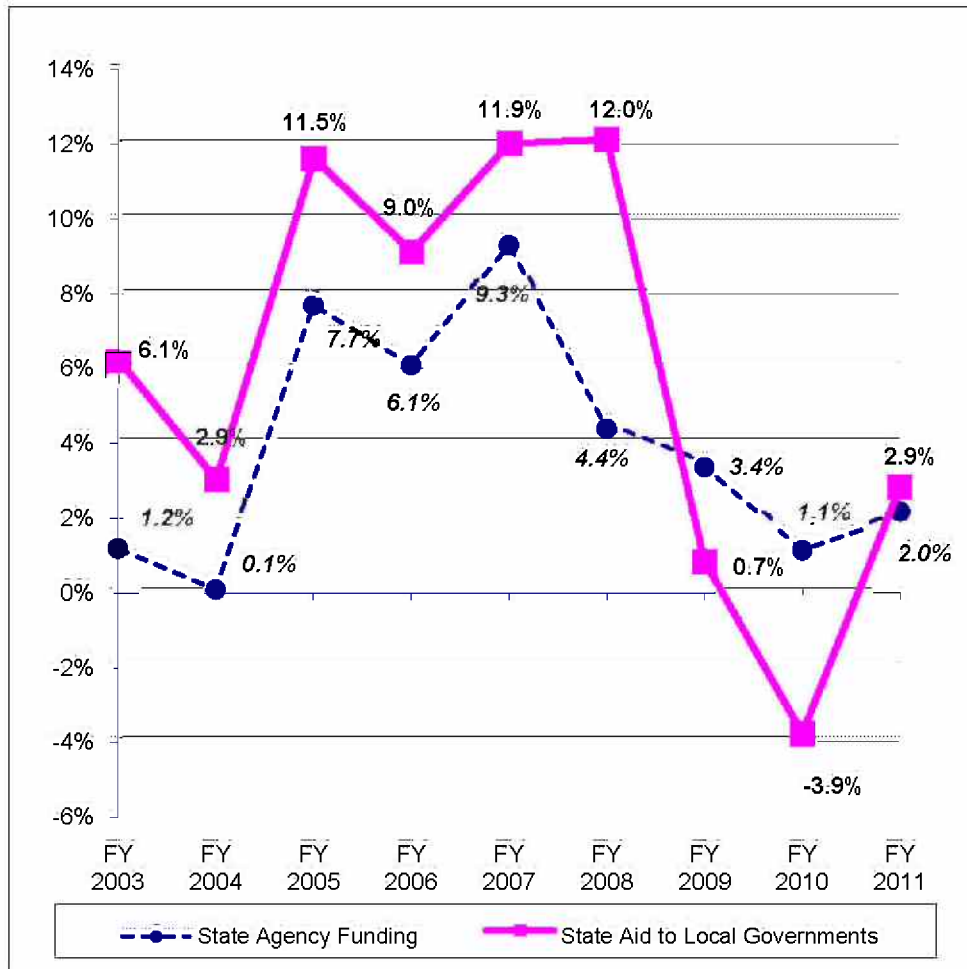
Annual Change in State Aid to Local Governments



State Aid by Governmental Entity (\$ in Millions)

	<u>FY 2007</u>	<u>FY 2008</u>	<u>FY 2009</u>	<u>FY 2010</u>	<u>FY 2011</u>	<u>Percent Change FY 07-11</u>
Public Schools	\$4,475.4	\$5,166.3	\$5,379.2	\$5,507.0	\$5,707.5	27.5%
Libraries	55.5	64.1	63.5	64.1	65.5	18.1%
Community Colleges	205.9	241.7	254.7	256.2	256.1	24.4%
Local Health	63.7	67.0	57.4	37.3	37.3	-41.4%
County/Municipal	953.5	906.8	738.2	376.9	357.1	-62.5%
Total	\$5,754.0	\$6,445.9	\$6,493.0	\$6,241.4	\$6,423.6	11.6%

Growth in State Aid Slowed Beginning in Fiscal 2009



Average Annual Increase Fiscal 2002-2008

Public Schools	10.2%
Libraries	6.4%
Community Colleges	5.2%
Local Health Departments	2.6%
Counties/Municipalities	4.1%
Total State Aid	8.8%

Average Annual Increase Fiscal 2008-2011

Public Schools	3.4%
Libraries	0.7%
Community Colleges	1.9%
Local Health Departments	-17.7%
Counties/Municipalities	-26.7%
Total State Aid	-0.1%

State Aid Trends by Governmental Entity

State Aid Amounts (\$ in Millions)

	<u>FY 2003</u>	<u>FY 2004</u>	<u>FY 2005</u>	<u>FY 2006</u>	<u>FY 2007</u>	<u>FY 2008</u>	<u>FY 2009</u>	<u>FY 2010</u>	<u>FY 2011</u>
Public Schools	\$3,117.1	\$3,310.4	\$3,624.9	\$4,009.0	\$4,475.4	\$5,166.3	\$5,379.2	\$5,507.0	\$5,707.5
Libraries	47.5	49.3	50.3	50.6	55.5	64.1	63.5	64.1	65.5
Community Colleges	183.3	174.9	184.0	191.6	205.9	241.7	254.7	256.2	256.1
Health Departments	61.9	60.4	60.9	61.9	63.7	67.0	57.4	37.3	37.3
Counties/Municipalities	704.1	636.5	796.6	829.9	953.5	906.8	738.2	376.9	357.1
Total	\$4,113.9	\$4,231.7	\$4,716.7	\$5,143.1	\$5,754.0	\$6,445.9	\$6,493.0	\$6,241.4	\$6,423.6

Percent Change in State Aid

	<u>FY 2003</u>	<u>FY 2004</u>	<u>FY 2005</u>	<u>FY 2006</u>	<u>FY 2007</u>	<u>FY 2008</u>	<u>FY 2009</u>	<u>FY 2010</u>	<u>FY 2011</u>
Public Schools	8.0%	6.2%	9.5%	10.6%	11.6%	15.4%	4.1%	2.4%	3.6%
Libraries	7.3%	3.9%	1.9%	0.7%	9.6%	15.5%	-1.0%	1.0%	2.3%
Community Colleges	2.7%	-4.6%	5.2%	4.1%	7.5%	17.4%	5.4%	0.6%	0.0%
Health Departments	8.0%	-2.4%	0.7%	1.6%	2.9%	5.2%	-14.4%	-35.0%	0.0%
Counties/Municipalities	-1.0%	-9.6%	25.2%	4.2%	14.9%	-4.9%	-18.6%	-48.9%	-5.3%
Total	6.1%	2.9%	11.5%	9.0%	11.9%	12.0%	0.7%	-3.9%	2.9%

Public Schools Receive Most of the Increases in State Aid

Annual Change in State Aid (\$ in Millions)

	<u>FY 2003</u>	<u>FY 2004</u>	<u>FY 2005</u>	<u>FY 2006</u>	<u>FY 2007</u>	<u>FY 2008</u>	<u>FY 2009</u>	<u>FY 2010</u>	<u>FY 2011</u>
Public Schools	\$231.2	\$193.4	\$314.5	\$384.1	\$466.4	\$690.9	\$212.9	\$127.8	\$200.5
Libraries	3.2	1.8	0.9	0.4	4.9	8.6	-0.7	0.6	1.5
Community Colleges	4.8	-8.4	9.1	7.6	14.3	35.8	13.0	1.5	-0.1
Health Departments	4.6	-1.5	0.4	1.0	1.8	3.3	-9.6	-20.1	0.0
Counties/Municipalities	-7.2	-67.6	160.1	33.3	123.6	-46.8	-168.5	-361.3	-19.8
Total	\$236.6	\$117.7	\$485.1	\$426.4	\$610.9	\$691.9	\$47.1	-\$251.6	\$182.1

Share of State Aid Change Since Fiscal 2002 (\$ in Millions)

	<u>Aid Change</u>	<u>Annual</u>	<u>Percent of</u>	<u>Share of</u>	<u>Share of</u>	<u>Percentage</u>
	<u>FY 2002-11</u>	<u>Change</u>	<u>Aid Change</u>	<u>FY 2002 Aid</u>	<u>FY 2011 Aid</u>	<u>Point</u>
						<u>Difference</u>
Public Schools	\$2,821.6	7.9%	110.8%	74.4%	88.9%	14.4
Libraries	21.3	4.5%	0.8%	1.1%	1.0%	-0.1
Community Colleges	77.6	4.1%	3.0%	4.6%	4.0%	-0.6
Health Departments	-20.1	-4.7%	-0.8%	1.5%	0.6%	-0.9
Counties/Municipalities	-354.2	-7.4%	-13.9%	18.3%	5.6%	-12.8
Total	\$2,546.2	5.8%	100.0%	100.0%	100.0%	0.0

State Aid to County and Municipal Governments

State Aid Amounts (\$ in Millions)

	<u>FY 2003</u>	<u>FY 2004</u>	<u>FY 2005</u>	<u>FY 2006</u>	<u>FY 2007</u>	<u>FY 2008</u>	<u>FY 2009</u>	<u>FY 2010</u>	<u>FY 2011</u>
Transportation	\$440.3	\$384.7	\$462.7	\$545.4	\$562.1	\$537.4	\$475.7	\$147.7	\$147.7
Public Safety	90.2	99.3	102.6	103.3	106.5	110.4	108.6	89.7	88.0
Land Preservation	18.8	20.6	16.5	46.3	135.6	97.1	20.1	9.2	15.3
Disparity Grants	115.2	105.8	93.1	96.6	109.5	114.8	115.5	121.4	97.1
Electric Utility Grant	30.6	26.2	30.6	30.6	30.6	29.6	0.0	0.0	0.0
Other Grants	9.1	-0.1	91.2	7.8	9.2	17.5	18.4	8.8	9.0
Total	\$704.1	\$636.5	\$796.6	\$829.9	\$953.5	\$906.8	\$738.2	\$376.9	\$357.1

Change in State Aid Since Fiscal 2002 (\$ in Millions)

	<u>Aid Change</u>	<u>Annual</u>	<u>Share of</u>	<u>Share of</u>	<u>Percentage</u>
	<u>FY 2002-11</u>	<u>Change</u>	<u>FY 2002 Aid</u>	<u>FY 2011 Aid</u>	<u>Point</u>
					<u>Difference</u>
Transportation	-\$298.6	-11.6%	62.7%	41.4%	-21.4
Public Safety	-5.0	-0.6%	13.1%	24.7%	11.6
Land Preservation	-28.7	-11.1%	6.2%	4.3%	-1.9
Disparity Grants	7.8	0.9%	12.6%	27.2%	14.6
Electric Utility Grant	-30.6	-100.0%	4.3%	0.0%	-4.3
Other Grants	0.9	1.2%	1.1%	2.5%	1.4
Total	-\$354.2	-7.4%	100.0%	100.0%	0.0