

---

# **Overview of State Aid to Local Governments Fiscal 2011 Allowance**

---

**Department of Legislative Services  
Office of Policy Analysis  
Annapolis, Maryland**

**January 2010**

**For further information concerning this document contact:**

Library and Information Services  
Office of Policy Analysis  
Department of Legislative Services  
90 State Circle  
Annapolis, Maryland 21401

Baltimore Area: 410-946-5400 ! Washington Area: 301-970-5400

Other Areas: 1-800-492-7122, Extension 5400

TDD: 410-946-5401 ! 301-970-5401

Maryland Relay Service: 1-800-735-2258

E-mail: [libr@mlis.state.md.us](mailto:libr@mlis.state.md.us)

Home Page: <http://mlis.state.md.us>

The Department of Legislative Services does not discriminate on the basis of age, ancestry, color, creed, marital status, national origin, race, religion, gender, sexual orientation, or disability in the admission or access to its programs, services, or activities. The Department's Information Officer has been designated to coordinate compliance with the nondiscrimination requirements contained in Section 35.107 of the Department of Justice Regulations. Requests for assistance should be directed to the Information Officer at the telephone numbers shown above.

# Contents

---

State Aid by Governmental Entity ..... 1

Annual Change in State Aid to Local Governments ..... 2

Growth in State Aid Slowed Beginning in Fiscal 2009..... 3

State Aid Trends by Governmental Entity ..... 4

Public Schools Receive Most of the Increases in State Aid ..... 5

State Aid to County and Municipal Governments..... 6

State Aid to Local Governments – Comparison by Per Capita Aid and Annual Growth ..... 7

State Aid to Local Governments – Fiscal 2011 Allowance ..... 8

State Aid to Local Governments – Fiscal 2010 Working Appropriation ..... 9

Dollar Difference in State Aid – Fiscal 2010 to 2011 ..... 10

Percent Change in State Aid – Fiscal 2010 to 2011 ..... 11

State Aid Reductions Proposed in State Budget..... 12

Contingent Reductions to State Aid to Local Governments in Fiscal 2011..... 13

Proposed Growth in State Aid to Local Governments ..... 14

State Assumed Functions in Baltimore City .....	15
State Transfer Taxes on the Decline – Impacts Program Open Space .....	16
Transportation Taxes and Fees Increase in Fiscal 2011 .....	17
Reductions to Highway User Revenues in Fiscal 2011 .....	18
Highway User Revenue Allocations in Fiscal 2011 .....	19
Change in Highway User Revenues.....	20
State Funding Under the Foundation Program in Fiscal 2011 .....	21
Total State Aid to Public Schools in Fiscal 2011 .....	22
Direct Aid to Public Schools and Teachers’ Retirement Payments in Fiscal 2011 .....	23
Comparison of Wealth Per Pupil for State Education Aid Programs .....	24
Majority of School Systems Experiencing Decline in FTE Student Enrollment.....	25
Students Approved for Free and Reduced Priced Meals .....	26
Students Receiving Special Education Services .....	27
Students Identified as Limited English Proficient.....	28
Racial Composition in Maryland Public Schools .....	29

Local Government Expenditures by Category .....	30
Local Government Expenditures .....	31



# State Aid by Governmental Entity

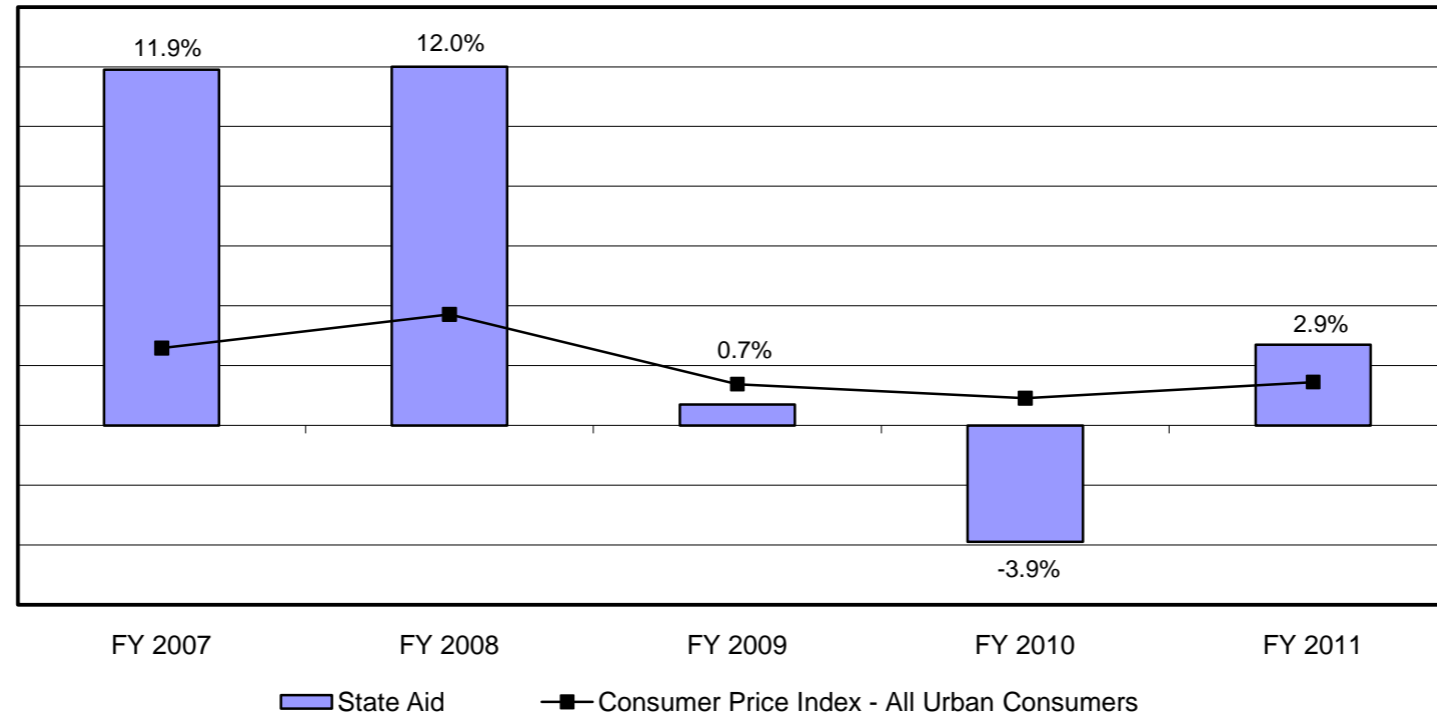
---

(\$ in Millions)

	<u>FY 2011 State Aid Amount</u>	<u>Percent of Total</u>	<u>FY 2011 Aid Change</u>	<u>Percent Change</u>
Public Schools	\$5,707.5	88.9%	\$200.5	3.6%
Libraries	65.5	1.0%	1.5	2.3%
Community Colleges	256.1	4.0%	-0.1	0.0%
Local Health Departments	37.3	0.6%	0.0	0.0%
Counties/Municipalities	357.1	5.6%	-19.8	-5.3%
<b>Total</b>	<b>\$6,423.6</b>	<b>100.0%</b>	<b>\$182.1</b>	<b>2.9%</b>

---

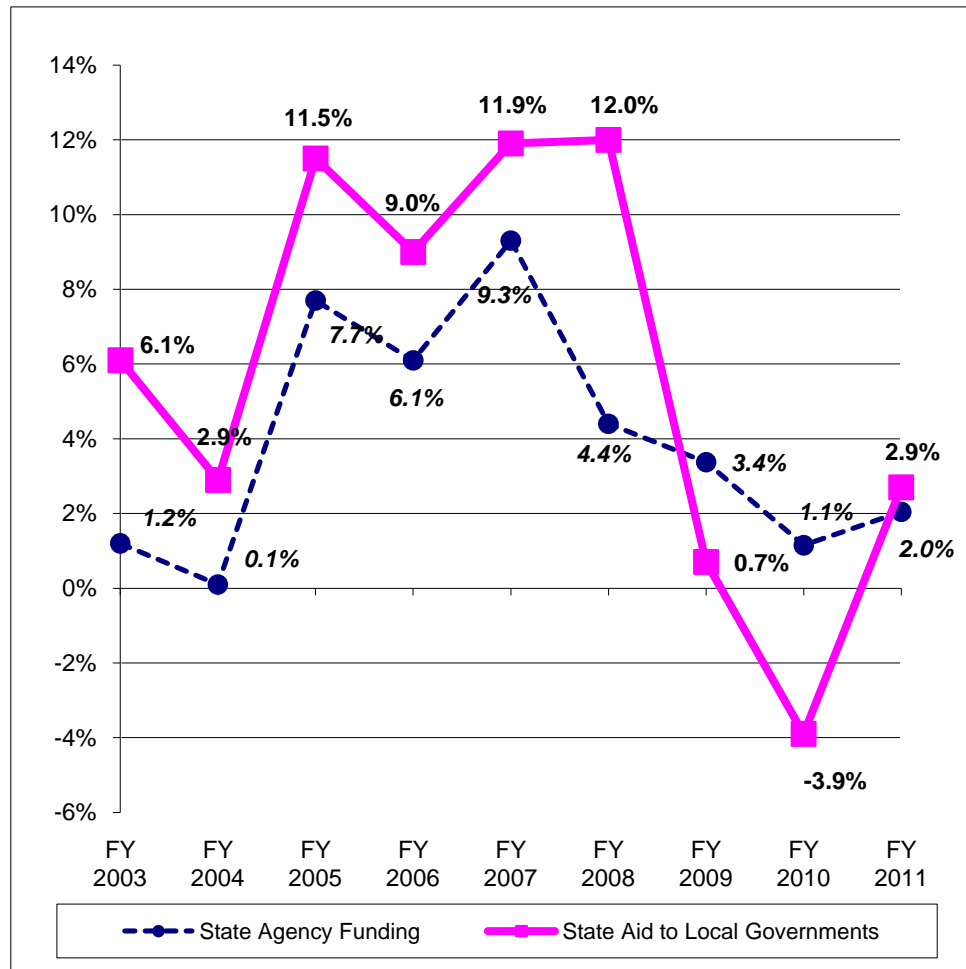
# Annual Change in State Aid to Local Governments



## State Aid by Governmental Entity (\$ in Millions)

	<u>FY 2007</u>	<u>FY 2008</u>	<u>FY 2009</u>	<u>FY 2010</u>	<u>FY 2011</u>	<u>Percent Change FY 07-11</u>
Public Schools	\$4,475.4	\$5,166.3	\$5,379.2	\$5,507.0	\$5,707.5	27.5%
Libraries	55.5	64.1	63.5	64.1	65.5	18.1%
Community Colleges	205.9	241.7	254.7	256.2	256.1	24.4%
Local Health	63.7	67.0	57.4	37.3	37.3	-41.4%
County/Municipal	953.5	906.8	738.2	376.9	357.1	-62.5%
<b>Total</b>	<b>\$5,754.0</b>	<b>\$6,445.9</b>	<b>\$6,493.0</b>	<b>\$6,241.4</b>	<b>\$6,423.6</b>	<b>11.6%</b>

# Growth in State Aid Slowed Beginning in Fiscal 2009



## Average Annual Increase Fiscal 2002-2008

Public Schools	10.2%
Libraries	6.4%
Community Colleges	5.2%
Local Health Departments	2.6%
Counties/Municipalities	4.1%
<b>Total State Aid</b>	<b>8.8%</b>

## Average Annual Increase Fiscal 2008-2011

Public Schools	3.4%
Libraries	0.7%
Community Colleges	1.9%
Local Health Departments	-17.7%
Counties/Municipalities	-26.7%
<b>Total State Aid</b>	<b>-0.1%</b>

# State Aid Trends by Governmental Entity

## State Aid Amounts (\$ in Millions)

	<u>FY 2003</u>	<u>FY 2004</u>	<u>FY 2005</u>	<u>FY 2006</u>	<u>FY 2007</u>	<u>FY 2008</u>	<u>FY 2009</u>	<u>FY 2010</u>	<u>FY 2011</u>
Public Schools	\$3,117.1	\$3,310.4	\$3,624.9	\$4,009.0	\$4,475.4	\$5,166.3	\$5,379.2	\$5,507.0	\$5,707.5
Libraries	47.5	49.3	50.3	50.6	55.5	64.1	63.5	64.1	65.5
Community Colleges	183.3	174.9	184.0	191.6	205.9	241.7	254.7	256.2	256.1
Health Departments	61.9	60.4	60.9	61.9	63.7	67.0	57.4	37.3	37.3
Counties/Municipalities	704.1	636.5	796.6	829.9	953.5	906.8	738.2	376.9	357.1
<b>Total</b>	<b>\$4,113.9</b>	<b>\$4,231.7</b>	<b>\$4,716.7</b>	<b>\$5,143.1</b>	<b>\$5,754.0</b>	<b>\$6,445.9</b>	<b>\$6,493.0</b>	<b>\$6,241.4</b>	<b>\$6,423.6</b>

## Percent Change in State Aid

	<u>FY 2003</u>	<u>FY 2004</u>	<u>FY 2005</u>	<u>FY 2006</u>	<u>FY 2007</u>	<u>FY 2008</u>	<u>FY 2009</u>	<u>FY 2010</u>	<u>FY 2011</u>
Public Schools	8.0%	6.2%	9.5%	10.6%	11.6%	15.4%	4.1%	2.4%	3.6%
Libraries	7.3%	3.9%	1.9%	0.7%	9.6%	15.5%	-1.0%	1.0%	2.3%
Community Colleges	2.7%	-4.6%	5.2%	4.1%	7.5%	17.4%	5.4%	0.6%	0.0%
Health Departments	8.0%	-2.4%	0.7%	1.6%	2.9%	5.2%	-14.4%	-35.0%	0.0%
Counties/Municipalities	-1.0%	-9.6%	25.2%	4.2%	14.9%	-4.9%	-18.6%	-48.9%	-5.3%
<b>Total</b>	<b>6.1%</b>	<b>2.9%</b>	<b>11.5%</b>	<b>9.0%</b>	<b>11.9%</b>	<b>12.0%</b>	<b>0.7%</b>	<b>-3.9%</b>	<b>2.9%</b>

# Public Schools Receive Most of the Increases in State Aid

## Annual Change in State Aid (\$ in Millions)

	<u>FY 2003</u>	<u>FY 2004</u>	<u>FY 2005</u>	<u>FY 2006</u>	<u>FY 2007</u>	<u>FY 2008</u>	<u>FY 2009</u>	<u>FY 2010</u>	<u>FY 2011</u>
Public Schools	\$231.2	\$193.4	\$314.5	\$384.1	\$466.4	\$690.9	\$212.9	\$127.8	\$200.5
Libraries	3.2	1.8	0.9	0.4	4.9	8.6	-0.7	0.6	1.5
Community Colleges	4.8	-8.4	9.1	7.6	14.3	35.8	13.0	1.5	-0.1
Health Departments	4.6	-1.5	0.4	1.0	1.8	3.3	-9.6	-20.1	0.0
Counties/Municipalities	-7.2	-67.6	160.1	33.3	123.6	-46.8	-168.5	-361.3	-19.8
<b>Total</b>	<b>\$236.6</b>	<b>\$117.7</b>	<b>\$485.1</b>	<b>\$426.4</b>	<b>\$610.9</b>	<b>\$691.9</b>	<b>\$47.1</b>	<b>-\$251.6</b>	<b>\$182.1</b>

## Share of State Aid Change Since Fiscal 2002 (\$ in Millions)

	<u>Aid Change</u>	<u>Annual</u>	<u>Percent of</u>	<u>Share of</u>	<u>Share of</u>	<u>Percentage</u>
	<u>FY 2002-11</u>	<u>Change</u>	<u>Aid Change</u>	<u>FY 2002 Aid</u>	<u>FY 2011 Aid</u>	<u>Point</u>
						<u>Difference</u>
Public Schools	\$2,821.6	7.9%	110.8%	74.4%	88.9%	14.4
Libraries	21.3	4.5%	0.8%	1.1%	1.0%	-0.1
Community Colleges	77.6	4.1%	3.0%	4.6%	4.0%	-0.6
Health Departments	-20.1	-4.7%	-0.8%	1.5%	0.6%	-0.9
Counties/Municipalities	-354.2	-7.4%	-13.9%	18.3%	5.6%	-12.8
<b>Total</b>	<b>\$2,546.2</b>	<b>5.8%</b>	<b>100.0%</b>	<b>100.0%</b>	<b>100.0%</b>	<b>0.0</b>

## State Aid to County and Municipal Governments

### State Aid Amounts (\$ in Millions)

	<u>FY 2003</u>	<u>FY 2004</u>	<u>FY 2005</u>	<u>FY 2006</u>	<u>FY 2007</u>	<u>FY 2008</u>	<u>FY 2009</u>	<u>FY 2010</u>	<u>FY 2011</u>
Transportation	\$440.3	\$384.7	\$462.7	\$545.4	\$562.1	\$537.4	\$475.7	\$147.7	\$147.7
Public Safety	90.2	99.3	102.6	103.3	106.5	110.4	108.6	89.7	88.0
Land Preservation	18.8	20.6	16.5	46.3	135.6	97.1	20.1	9.2	15.3
Disparity Grants	115.2	105.8	93.1	96.6	109.5	114.8	115.5	121.4	97.1
Electric Utility Grant	30.6	26.2	30.6	30.6	30.6	29.6	0.0	0.0	0.0
Other Grants	9.1	-0.1	91.2	7.8	9.2	17.5	18.4	8.8	9.0
<b>Total</b>	<b>\$704.1</b>	<b>\$636.5</b>	<b>\$796.6</b>	<b>\$829.9</b>	<b>\$953.5</b>	<b>\$906.8</b>	<b>\$738.2</b>	<b>\$376.9</b>	<b>\$357.1</b>

### Change in State Aid Since Fiscal 2002 (\$ in Millions)

	<u>Aid Change</u>	<u>Annual</u>	<u>Share of</u>	<u>Share of</u>	<u>Percentage</u>
	<u>FY 2002-11</u>	<u>Change</u>	<u>FY 2002 Aid</u>	<u>FY 2011 Aid</u>	<u>Point</u>
					<u>Difference</u>
Transportation	-\$298.6	-11.6%	62.7%	41.4%	-21.4
Public Safety	-5.0	-0.6%	13.1%	24.7%	11.6
Land Preservation	-28.7	-11.1%	6.2%	4.3%	-1.9
Disparity Grants	7.8	0.9%	12.6%	27.2%	14.6
Electric Utility Grant	-30.6	-100.0%	4.3%	0.0%	-4.3
Other Grants	0.9	1.2%	1.1%	2.5%	1.4
<b>Total</b>	<b>-\$354.2</b>	<b>-7.4%</b>	<b>100.0%</b>	<b>100.0%</b>	<b>0.0</b>

## State Aid to Local Governments – Comparison by Per Capita Aid and Annual Growth Fiscal 2010 and 2011

County	Fiscal 2010 Appropriation	Fiscal 2011 Allowance	Difference	Percent Difference	<u>Per Capita State Aid</u>	<u>Annual Growth in State Aid</u>		
Allegany	\$111,700,264	\$109,137,371	-\$2,562,893	-2.3%	1. Baltimore City	\$1,871	1. Montgomery	10.4%
Anne Arundel	385,001,481	412,079,133	27,077,652	7.0%	2. Caroline	1,602	2. Howard	7.7%
Baltimore City	1,158,057,873	1,191,419,130	33,361,257	2.9%	3. Allegany	1,511	3. Anne Arundel	7.0%
Baltimore	659,405,097	680,997,738	21,592,641	3.3%	4. Wicomico	1,496	4. Worcester	6.0%
Calvert	106,275,994	108,790,142	2,514,148	2.4%	5. Charles	1,327	5. Dorchester	4.9%
Caroline	52,426,088	53,086,096	660,008	1.3%	6. Somerset	1,307	6. Talbot	4.7%
Carroll	178,179,683	179,846,383	1,666,700	0.9%	7. Prince George's	1,305	7. Cecil	3.8%
Cecil	119,359,746	123,843,942	4,484,196	3.8%	8. Dorchester	1,287	8. Washington	3.4%
Charles	182,940,728	186,739,725	3,798,997	2.1%	9. Cecil	1,239	9. Queen Anne's	3.3%
Dorchester	39,261,205	41,187,714	1,926,509	4.9%	10. Calvert	1,227	10. Baltimore	3.3%
Frederick	253,819,992	261,984,007	8,164,015	3.2%	11. Washington	1,217	11. Frederick	3.2%
Garrett	36,470,977	35,929,864	-541,113	-1.5%	12. Garrett	1,210	12. Baltimore City	2.9%
Harford	258,752,806	263,916,731	5,163,925	2.0%	13. Frederick	1,161	13. St. Mary's	2.9%
Howard	272,361,884	293,219,154	20,857,270	7.7%	14. St. Mary's	1,135	14. Calvert	2.4%
Kent	14,004,948	14,027,760	22,812	0.2%	15. Harford	1,098	15. Charles	2.1%
Montgomery	695,288,062	767,374,112	72,086,050	10.4%	16. Howard	1,066	16. Harford	2.0%
Prince George's	1,104,692,880	1,071,578,926	-33,113,954	-3.0%	17. Carroll	1,062	17. Wicomico	1.9%
Queen Anne's	39,845,194	41,173,246	1,328,052	3.3%	18. Queen Anne's	874	18. Somerset	1.3%
St. Mary's	112,102,955	115,305,838	3,202,883	2.9%	19. Baltimore	867	19. Caroline	1.3%
Somerset	33,719,646	34,144,685	425,039	1.3%	20. Montgomery	807	20. Carroll	0.9%
Talbot	16,980,198	17,773,858	793,660	4.7%	21. Anne Arundel	804	21. Kent	0.2%
Washington	171,112,143	176,938,967	5,826,824	3.4%	22. Kent	696	22. Garrett	-1.5%
Wicomico	138,016,738	140,660,971	2,644,233	1.9%	23. Worcester	612	23. Allegany	-2.3%
Worcester	28,476,526	30,179,497	1,702,971	6.0%	24. Talbot	491	24. Prince George's	-3.0%
Unallocated	73,177,234	72,228,495	-948,739	-1.3%				
<b>Total</b>	<b>\$6,241,430,342</b>	<b>\$6,423,563,485</b>	<b>\$182,133,143</b>	<b>2.9%</b>	<b>Statewide Average</b>	<b>\$1,140</b>	<b>Statewide Average</b>	<b>2.9%</b>

## State Aid to Local Governments – Fiscal 2011 Allowance (\$ in Thousands)

County	County/ Municipal	Community Colleges	Direct State Aid				Subtotal	Retirement	Total	Change Over FY 2010	Percent Change
			Public Schools	Libraries	Health						
Allegany	\$7,495	\$5,732	\$83,640	\$758	\$909	\$98,534	\$10,604	\$109,137	-\$2,563	-2.3%	
Anne Arundel	8,456	28,948	293,084	1,913	3,142	335,543	76,536	412,079	27,078	7.0%	
Baltimore City	224,501	0	870,278	6,461	6,675	1,107,916	83,503	1,191,419	33,361	2.9%	
Baltimore	10,720	36,315	524,667	5,249	4,302	581,253	99,745	680,998	21,593	3.3%	
Calvert	1,277	2,152	86,906	402	370	91,107	17,683	108,790	2,514	2.4%	
Caroline	2,996	1,367	42,663	273	538	47,837	5,249	53,086	660	1.3%	
Carroll	2,298	7,483	140,703	982	1,232	152,698	27,149	179,846	1,667	0.9%	
Cecil	1,417	5,146	100,091	717	806	108,178	15,666	123,844	4,484	3.8%	
Charles	1,985	6,869	150,402	791	995	161,042	25,698	186,740	3,799	2.1%	
Dorchester	2,948	1,233	31,775	244	429	36,628	4,560	41,188	1,927	4.9%	
Frederick	3,450	8,425	208,329	1,140	1,512	222,856	39,128	261,984	8,164	3.2%	
Garrett	2,862	3,433	24,385	155	437	31,272	4,658	35,930	-541	-1.5%	
Harford	3,430	10,302	209,734	1,548	1,737	226,752	37,165	263,917	5,164	2.0%	
Howard	4,625	13,668	209,873	770	1,215	230,151	63,068	293,219	20,857	7.7%	
Kent	606	562	9,980	96	336	11,580	2,448	14,028	23	0.2%	
Montgomery	14,629	41,218	524,390	2,662	3,015	585,914	181,460	767,374	72,086	10.4%	
Prince George's	24,126	23,129	880,179	5,648	5,007	938,088	133,491	1,071,579	-33,114	-3.0%	
Queen Anne's	885	1,604	31,190	132	418	34,228	6,945	41,173	1,328	3.3%	
St. Mary's	1,467	2,253	94,882	624	809	100,035	15,271	115,306	3,203	2.9%	
Somerset	5,602	787	23,847	263	429	30,928	3,216	34,145	425	1.3%	
Talbot	840	1,247	11,216	101	329	13,734	4,040	17,774	794	4.7%	
Washington	2,220	7,746	144,499	1,128	1,381	156,974	19,965	176,939	5,827	3.4%	
Wicomico	3,885	4,504	115,832	838	947	126,007	14,654	140,661	2,644	1.9%	
Worcester	1,365	1,816	18,046	138	313	21,678	8,502	30,179	1,703	6.0%	
Unallocated	23,020	6,463	27,088	15,658	0	72,228	0	72,228	-949	-1.3%	
<b>Total</b>	<b>\$357,106</b>	<b>\$222,403</b>	<b>\$4,857,679</b>	<b>\$48,690</b>	<b>\$37,283</b>	<b>\$5,523,161</b>	<b>\$900,402</b>	<b>\$6,423,563</b>	<b>\$182,133</b>	<b>2.9%</b>	

Note: County/Municipal includes the municipal share of police aid, highway user revenue, and fire aid.

## State Aid to Local Governments – Fiscal 2010 Working Appropriation (\$ in Thousands)

County	County/ Municipal	Community Colleges	Direct State Aid				Subtotal	Retirement	Total
			Public Schools	Libraries	Health				
Allegany	\$8,691	\$5,923	\$86,020	\$770	\$909	\$102,312	\$9,388	\$111,700	
Anne Arundel	7,533	29,428	276,137	1,835	3,142	318,075	66,927	385,001	
Baltimore City	228,555	0	840,748	6,548	6,675	1,082,526	75,532	1,158,058	
Baltimore	9,842	37,009	510,676	5,246	4,302	567,075	92,330	659,405	
Calvert	1,205	2,194	86,382	398	370	90,549	15,727	106,276	
Caroline	2,962	1,394	42,501	273	538	47,669	4,757	52,426	
Carroll	2,132	7,587	141,563	982	1,232	153,495	24,684	178,180	
Cecil	1,335	5,211	97,326	704	806	105,383	13,977	119,360	
Charles	1,837	7,003	149,618	795	995	160,247	22,694	182,941	
Dorchester	2,920	1,257	30,253	242	429	35,100	4,161	39,261	
Frederick	3,280	8,583	204,645	1,099	1,512	219,119	34,701	253,820	
Garrett	2,901	3,426	25,364	155	437	32,285	4,186	36,471	
Harford	3,184	10,525	207,670	1,549	1,737	224,666	34,087	258,753	
Howard	4,142	13,928	197,807	766	1,215	217,859	54,502	272,362	
Kent	587	573	10,162	94	336	11,752	2,253	14,005	
Montgomery	13,517	42,355	473,567	2,606	3,015	535,061	160,227	695,288	
Prince George's	41,386	23,661	909,545	5,962	5,007	985,562	119,131	1,104,693	
Queen Anne's	840	1,635	30,744	127	418	33,764	6,081	39,845	
St. Mary's	1,388	2,297	93,427	629	809	98,550	13,553	112,103	
Somerset	5,666	807	23,679	261	429	30,842	2,877	33,720	
Talbot	792	1,272	10,934	101	329	13,428	3,552	16,980	
Washington	2,091	7,882	140,854	1,117	1,381	153,326	17,786	171,112	
Wicomico	3,795	4,578	114,921	822	947	125,064	12,952	138,017	
Worcester	1,273	1,846	17,402	138	313	20,972	7,504	28,477	
Unallocated	25,045	6,559	25,965	15,609	0	73,177	0	73,177	
<b>Total</b>	<b>\$376,902</b>	<b>\$226,934</b>	<b>\$4,747,912</b>	<b>\$48,828</b>	<b>\$37,283</b>	<b>\$5,437,860</b>	<b>\$803,570</b>	<b>\$6,241,430</b>	

Note: County/Municipal includes the municipal share of police aid, highway user revenue, and fire aid.

## Dollar Difference in State Aid – Fiscal 2010 to 2011 (\$ in Thousands)

County	Direct State Aid						Retirement	Total
	County/ Municipal	Community Colleges	Public Schools	Libraries	Health	Subtotal		
Allegany	-\$1,196	-\$191	-\$2,380	-\$12	\$0	-\$3,779	\$1,216	-\$2,563
Anne Arundel	923	-480	16,947	78	0	17,468	9,609	27,078
Baltimore City	-4,054	0	29,530	-86	0	25,390	7,971	33,361
Baltimore	878	-694	13,990	3	0	14,178	7,415	21,593
Calvert	72	-42	524	4	0	558	1,956	2,514
Caroline	34	-27	161	0	0	168	492	660
Carroll	166	-104	-860	0	0	-798	2,464	1,667
Cecil	82	-64	2,765	12	0	2,794	1,690	4,484
Charles	148	-134	784	-4	0	795	3,004	3,799
Dorchester	28	-24	1,522	2	0	1,528	399	1,927
Frederick	169	-158	3,685	40	0	3,736	4,428	8,164
Garrett	-40	7	-979	-1	0	-1,012	471	-541
Harford	246	-224	2,065	-1	0	2,086	3,078	5,164
Howard	483	-260	12,065	4	0	12,292	8,565	20,857
Kent	19	-11	-181	1	0	-172	195	23
Montgomery	1,112	-1,137	50,823	56	0	50,853	21,233	72,086
Prince George's	-17,261	-532	-29,367	-315	0	-47,474	14,360	-33,114
Queen Anne's	45	-32	446	5	0	464	864	1,328
St. Mary's	80	-44	1,455	-5	0	1,485	1,718	3,203
Somerset	-64	-19	168	2	0	86	339	425
Talbot	48	-25	282	0	0	305	489	794
Washington	129	-136	3,645	11	0	3,648	2,179	5,827
Wicomico	90	-74	911	16	0	943	1,702	2,644
Worcester	92	-30	644	0	0	706	997	1,703
Unallocated	-2,025	-96	1,123	49	0	-949	0	-949
<b>Total</b>	<b>-\$19,796</b>	<b>-\$4,531</b>	<b>\$109,767</b>	<b>-\$138</b>	<b>\$0</b>	<b>\$85,301</b>	<b>\$96,832</b>	<b>\$182,133</b>

Note: County/Municipal includes the municipal share of police aid, highway user revenue, and fire aid.

## Percent Change in State Aid – Fiscal 2010 to 2011

County	Direct State Aid						Retirement	Total
	County/ Municipal	Community Colleges	Public Schools	Libraries	Health	Subtotal		
Allegany	-13.8%	-3.2%	-2.8%	-1.5%	0.0%	-3.7%	12.9%	-2.3%
Anne Arundel	12.3%	-1.6%	6.1%	4.3%	0.0%	5.5%	14.4%	7.0%
Baltimore City	-1.8%	n/a	3.5%	-1.3%	0.0%	2.3%	10.6%	2.9%
Baltimore	8.9%	-1.9%	2.7%	0.1%	0.0%	2.5%	8.0%	3.3%
Calvert	6.0%	-1.9%	0.6%	1.0%	0.0%	0.6%	12.4%	2.4%
Caroline	1.1%	-1.9%	0.4%	0.1%	0.0%	0.4%	10.3%	1.3%
Carroll	7.8%	-1.4%	-0.6%	0.0%	0.0%	-0.5%	10.0%	0.9%
Cecil	6.1%	-1.2%	2.8%	1.8%	0.0%	2.7%	12.1%	3.8%
Charles	8.1%	-1.9%	0.5%	-0.5%	0.0%	0.5%	13.2%	2.1%
Dorchester	1.0%	-1.9%	5.0%	0.9%	0.0%	4.4%	9.6%	4.9%
Frederick	5.2%	-1.8%	1.8%	3.7%	0.0%	1.7%	12.8%	3.2%
Garrett	-1.4%	0.2%	-3.9%	-0.4%	0.0%	-3.1%	11.3%	-1.5%
Harford	7.7%	-2.1%	1.0%	0.0%	0.0%	0.9%	9.0%	2.0%
Howard	11.7%	-1.9%	6.1%	0.5%	0.0%	5.6%	15.7%	7.7%
Kent	3.3%	-1.9%	-1.8%	1.5%	0.0%	-1.5%	8.6%	0.2%
Montgomery	8.2%	-2.7%	10.7%	2.1%	0.0%	9.5%	13.3%	10.4%
Prince George's	-41.7%	-2.2%	-3.2%	-5.3%	0.0%	-4.8%	12.1%	-3.0%
Queen Anne's	5.4%	-1.9%	1.5%	3.9%	0.0%	1.4%	14.2%	3.3%
St. Mary's	5.7%	-1.9%	1.6%	-0.8%	0.0%	1.5%	12.7%	2.9%
Somerset	-1.1%	-2.4%	0.7%	0.8%	0.0%	0.3%	11.8%	1.3%
Talbot	6.0%	-1.9%	2.6%	0.1%	0.0%	2.3%	13.8%	4.7%
Washington	6.2%	-1.7%	2.6%	1.0%	0.0%	2.4%	12.2%	3.4%
Wicomico	2.4%	-1.6%	0.8%	2.0%	0.0%	0.8%	13.1%	1.9%
Worcester	7.2%	-1.6%	3.7%	-0.2%	0.0%	3.4%	13.3%	6.0%
Unallocated	-8.1%	-1.5%	4.3%	0.3%	n/a	-1.3%	n/a	-1.3%
<b>Total</b>	<b>-5.3%</b>	<b>-2.0%</b>	<b>2.3%</b>	<b>-0.3%</b>	<b>0.0%</b>	<b>1.6%</b>	<b>12.1%</b>	<b>2.9%</b>

Note: County/Municipal includes the municipal share of police aid, highway user revenue, and fire aid.

## State Aid Reductions from Statutorily Mandated Amounts Proposed in State Budget

---

**Fiscal 2011**  
(\$ in Millions)

<u>Aid Program</u>	<u>Reduction Amount</u>	<u>Share of Total Funding</u>
Student Transportation	\$4.3	1.9%
Community College Aid	23.1	10.6%
Police Aid	19.0	29.4%
Highway User Revenues	238.3	62.9%
Local Health Grants	3.7	9.1%
Retirement Grants	0.5	100.0%
<b>Total</b>	<b>\$288.9</b>	<b>4.3%</b>

## Contingent Reductions to State Aid to Local Governments in Fiscal 2011 From Statutorily Mandated Amounts

County	Student Transportation	Community College Aid	Police Aid	Highway User Revenues	Local Health	Retirement Grants	Total Effect
Allegany	-\$82,213	-\$724,563	-\$306,897	-\$4,245,923	\$156,258	\$0	-\$5,203,338
Anne Arundel	-371,049	-2,910,940	-2,126,688	-19,313,102	-37,864	-34,517	-24,794,160
Baltimore City	-301,203	0	-45,980	-43,130,070	-1,450,303	-395,698	-45,323,254
Baltimore	-466,615	-4,018,624	-3,304,917	-25,638,515	-1,205,542	0	-34,634,213
Calvert	-101,385	-293,818	-261,934	-4,245,993	109,399	0	-4,793,731
Caroline	-47,013	-217,438	-121,630	-2,954,593	84,849	0	-3,255,825
Carroll	-173,532	-722,212	-571,085	-8,465,789	-28,829	-39,282	-10,000,729
Cecil	-91,009	-646,234	-349,805	-4,747,747	54,517	0	-5,780,278
Charles	-184,639	-937,800	-429,703	-6,155,496	35,839	0	-7,671,799
Dorchester	-42,867	-196,119	-137,047	-3,285,210	31,909	0	-3,629,334
Frederick	-208,637	-1,179,609	-761,412	-11,283,170	19,663	0	-13,413,165
Garrett	-54,597	-173,116	-82,805	-3,704,314	80,123	0	-3,934,709
Harford	-217,321	-1,092,051	-982,059	-9,869,761	-251,040	0	-12,412,232
Howard	-267,727	-1,691,731	-747,623	-9,492,571	-163,871	0	-12,363,523
Kent	-28,513	-89,372	-72,569	-1,691,757	34,544	0	-1,847,667
Montgomery	-574,922	-3,756,581	-5,074,771	-27,334,594	-168,744	0	-36,909,612
Prince George's	-625,622	-1,834,620	-1,749,925	-22,939,638	-1,438,324	0	-28,588,129
Queen Anne's	-60,335	-255,132	-152,327	-3,471,016	47,138	0	-3,891,672
St. Mary's	-114,970	-307,628	-318,260	-4,720,840	-70,358	0	-5,532,056
Somerset	-33,271	-108,090	-86,863	-1,959,793	-9,899	0	-2,197,916
Talbot	-28,901	-198,430	-146,101	-2,801,695	94,262	0	-3,080,865
Washington	-121,401	-919,619	-528,429	-7,202,474	71,308	0	-8,700,615
Wicomico	-91,561	-578,234	-368,770	-5,523,065	126,430	0	-6,435,200
Worcester	-54,369	-233,101	-228,372	-4,158,870	162,019	0	-4,512,693
Unallocated	0	0	0	0	0	0	0
<b>Total</b>	<b>-\$4,343,672</b>	<b>-\$23,085,062</b>	<b>-\$18,955,972</b>	<b>-\$238,335,996</b>	<b>-\$3,716,516</b>	<b>-\$469,497</b>	<b>-\$288,906,715</b>

## Proposed Growth in State Aid to Local Governments

County	FY 2010	Mandatory FY 2011	Percent Difference	Contingent Reductions	Proposed FY 2011	Percent Difference
Allegany	\$111,700,264	\$114,340,709	2.4%	-\$5,203,338	\$109,137,371	-2.3%
Anne Arundel	385,001,481	436,873,293	13.5%	-24,794,160	412,079,133	7.0%
Baltimore City	1,158,057,873	1,236,742,384	6.8%	-45,323,254	1,191,419,130	2.9%
Baltimore	659,405,097	715,631,951	8.5%	-34,634,213	680,997,738	3.3%
Calvert	106,275,994	113,583,873	6.9%	-4,793,731	108,790,142	2.4%
Caroline	52,426,088	56,341,921	7.5%	-3,255,825	53,086,096	1.3%
Carroll	178,179,683	189,847,112	6.5%	-10,000,729	179,846,383	0.9%
Cecil	119,359,746	129,624,220	8.6%	-5,780,278	123,843,942	3.8%
Charles	182,940,728	194,411,524	6.3%	-7,671,799	186,739,725	2.1%
Dorchester	39,261,205	44,817,048	14.2%	-3,629,334	41,187,714	4.9%
Frederick	253,819,992	275,397,172	8.5%	-13,413,165	261,984,007	3.2%
Garrett	36,470,977	39,864,573	9.3%	-3,934,709	35,929,864	-1.5%
Harford	258,752,806	276,328,963	6.8%	-12,412,232	263,916,731	2.0%
Howard	272,361,884	305,582,677	12.2%	-12,363,523	293,219,154	7.7%
Kent	14,004,948	15,875,427	13.4%	-1,847,667	14,027,760	0.2%
Montgomery	695,288,062	804,283,724	15.7%	-36,909,612	767,374,112	10.4%
Prince George's	1,104,692,880	1,100,167,055	-0.4%	-28,588,129	1,071,578,926	-3.0%
Queen Anne's	39,845,194	45,064,918	13.1%	-3,891,672	41,173,246	3.3%
St. Mary's	112,102,955	120,837,894	7.8%	-5,532,056	115,305,838	2.9%
Somerset	33,719,646	36,342,601	7.8%	-2,197,916	34,144,685	1.3%
Talbot	16,980,198	20,854,723	22.8%	-3,080,865	17,773,858	4.7%
Washington	171,112,143	185,639,582	8.5%	-8,700,615	176,938,967	3.4%
Wicomico	138,016,738	147,096,171	6.6%	-6,435,200	140,660,971	1.9%
Worcester	28,476,526	34,692,190	21.8%	-4,512,693	30,179,497	6.0%
Unallocated	73,177,234	72,228,495	-1.3%	0	72,228,495	-1.3%
<b>Total</b>	<b>\$6,241,430,342</b>	<b>\$6,712,470,200</b>	<b>7.5%</b>	<b>-\$288,906,715</b>	<b>\$6,423,563,485</b>	<b>2.9%</b>

Source: Department of Legislative Services

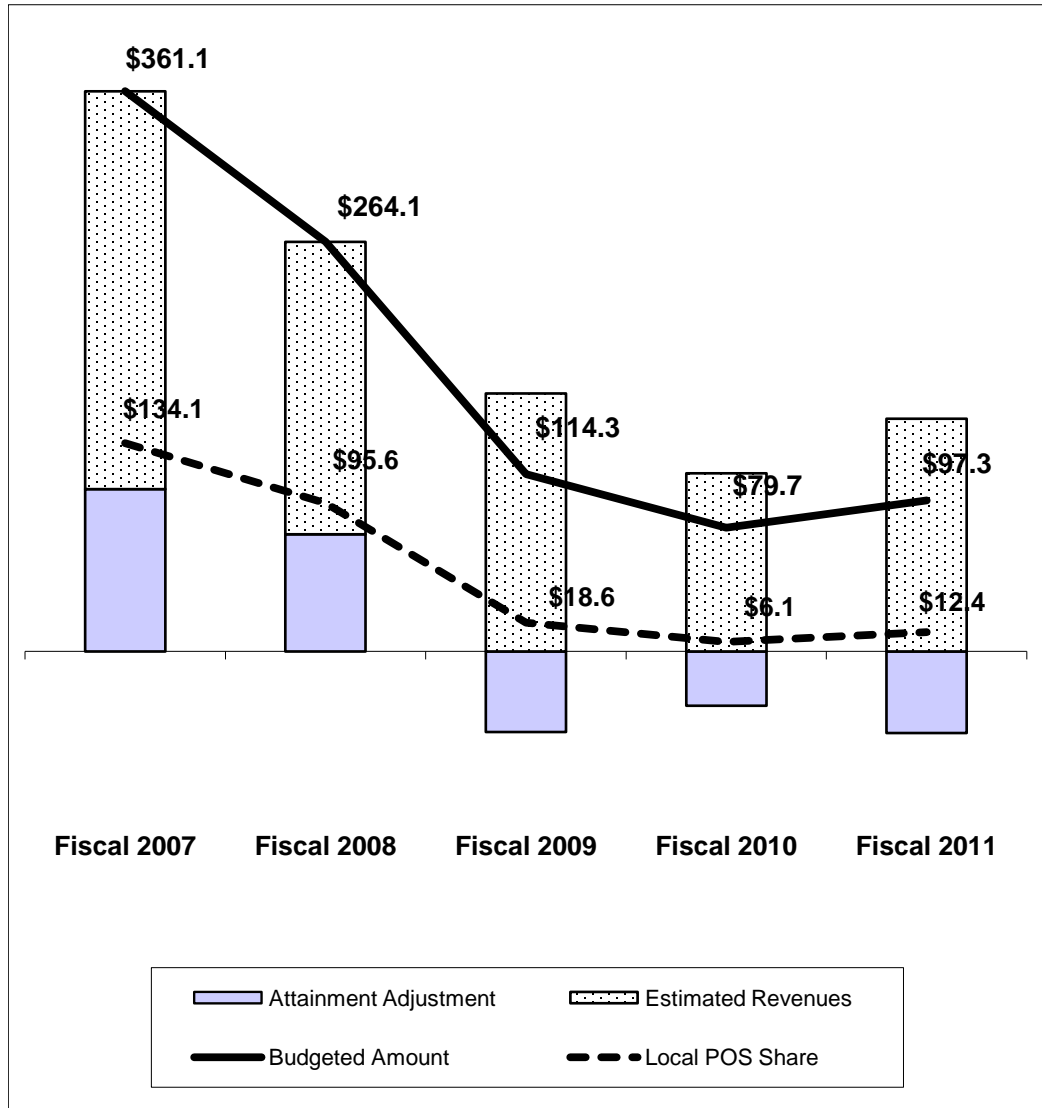
## State Assumed Functions in Baltimore City

(\$ in Millions)

State Assumed Functions	<u>FY 2009</u>	<u>FY 2010</u>	<u>FY 2011</u>	<u>Difference</u>	<u>Percent Difference</u>
Baltimore City Community College	\$40.4	\$40.2	\$40.8	\$0.6	1.6%
Baltimore City Detention Center	90.2	86.4	91.1	4.7	5.4%
Baltimore City Central Booking Facility	<u>53.1</u>	<u>47.8</u>	<u>50.2</u>	<u>2.4</u>	<u>5.1%</u>
<b>Subtotal</b>	<b>\$183.7</b>	<b>\$174.4</b>	<b>\$182.2</b>	<b>\$7.8</b>	<b>4.5%</b>
Direct Aid and Retirement Payments	<u>1,212.9</u>	<u>\$1,158.1</u>	<u>\$1,165.3</u>	<u>\$7.3</u>	<u>0.6%</u>
<b>Total State Assistance</b>	<b>\$1,396.6</b>	<b>\$1,332.4</b>	<b>\$1,347.5</b>	<b>\$15.1</b>	<b>1.1%</b>

# State Transfer Taxes on the Decline – Impacts Program Open Space

(\$ in Millions)



Fiscal 2009	
Attainment Adjustment	-\$52.0
Estimated Revenue	166.3
Budgeted Amount	114.3
<b>Local POS Share</b>	<b>\$18.6</b>

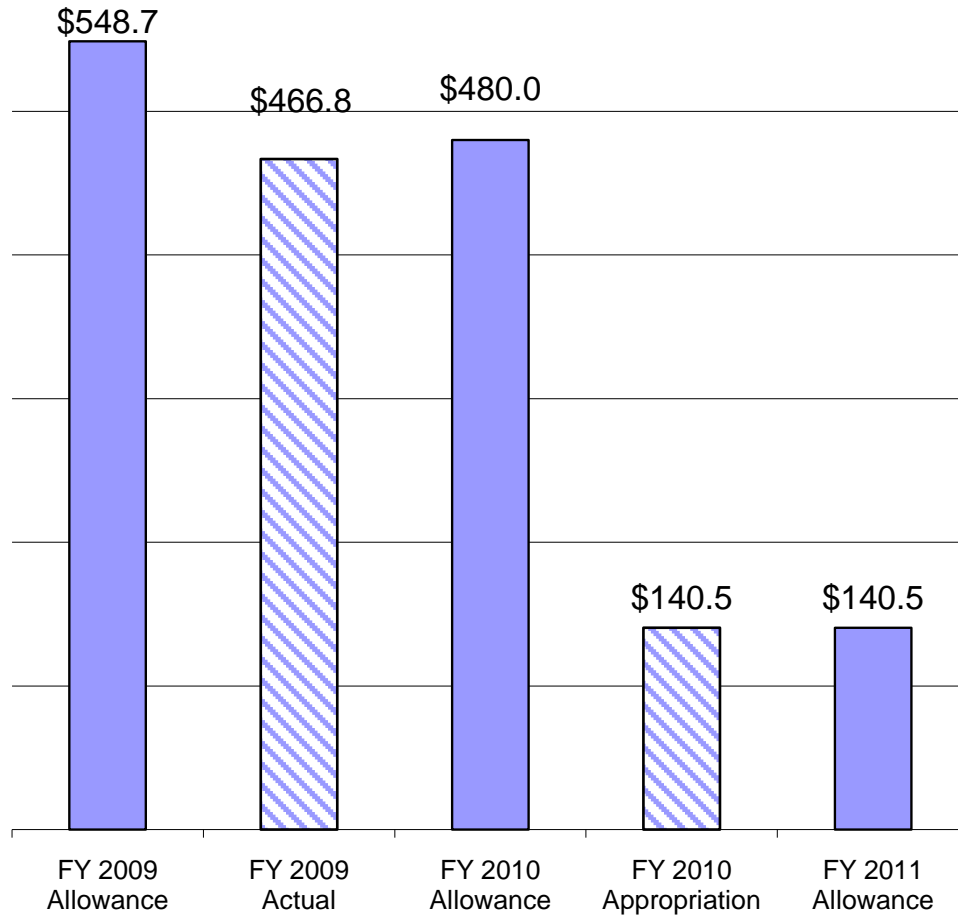
Fiscal 2010	
Attainment Adjustment	-\$35.1
Estimated Revenue	114.74
Budgeted Amount	79.7
<b>Local POS Share</b>	<b>\$6.1</b>

Fiscal 2011	
Attainment Adjustment	-\$52.6
Estimated Revenue	149.9
Budgeted Amount	97.3
<b>Local POS Share</b>	<b>\$12.4</b>

Source: Department of Legislative Services

## Transportation Taxes and Fees Increase in Fiscal 2011 (\$ in Millions)

### Local Highway User Revenues



Fiscal 2009	
Vehicle Fuel Taxes	\$736.1
Vehicle Titling Taxes	514.2
Vehicle Registration Fees	355.0
<b>Local Highway User Revenues</b>	<b>\$466.8</b>

Fiscal 2010	
Vehicle Fuel Taxes	\$740.2
Vehicle Titling Taxes	514.0
Vehicle Registration Fees	357.0
<b>Local Highway User Revenues</b>	<b>\$140.5</b>

Fiscal 2011	
Vehicle Fuel Taxes	\$751.4
Vehicle Titling Taxes	552.0
Vehicle Registration Fees	374.1
<b>Local Highway User Revenues</b>	<b>\$140.5</b>

Source: Department of Legislative Services

## Reductions to Highway User Revenues in Fiscal 2011 From Mandatory Funding Levels

County	Statutory Funding Level	2009 BRFA Reduction	Contingent Reduction	Total Reductions	Proposed Funding Level	Percent Reduction
Allegany	\$6,387,531	-\$1,831,846	-\$4,245,923	-\$6,077,769	\$309,762	-95.2%
Anne Arundel	27,895,443	-7,996,894	-19,313,102	-27,309,996	585,447	-97.9%
Baltimore City	193,923,000	-19,871,424	-43,130,070	-63,001,494	130,921,506	-32.5%
Baltimore	37,511,924	-10,757,194	-25,638,515	-36,395,709	1,116,215	-97.0%
Calvert	6,235,183	-1,777,551	-4,245,993	-6,023,544	211,639	-96.6%
Caroline	4,433,838	-1,272,303	-2,954,593	-4,226,896	206,942	-95.3%
Carroll	12,563,512	-3,592,233	-8,465,789	-12,058,022	505,490	-96.0%
Cecil	7,008,274	-1,990,712	-4,747,747	-6,738,459	269,815	-96.2%
Charles	9,058,322	-2,578,168	-6,155,496	-8,733,664	324,658	-96.4%
Dorchester	4,922,052	-1,406,739	-3,285,210	-4,691,949	230,103	-95.3%
Frederick	16,646,169	-4,738,497	-11,283,170	-16,021,667	624,502	-96.2%
Garrett	5,559,213	-1,592,885	-3,704,314	-5,297,199	262,014	-95.3%
Harford	14,603,727	-4,171,792	-9,869,761	-14,041,553	562,174	-96.2%
Howard	13,870,861	-3,960,732	-9,492,571	-13,453,303	417,558	-97.0%
Kent	2,515,801	-714,961	-1,691,757	-2,406,718	109,083	-95.7%
Montgomery	39,452,563	-11,235,610	-27,334,594	-38,570,204	882,359	-97.8%
Prince George's	33,995,832	-9,788,358	-22,939,638	-32,727,996	1,267,836	-96.3%
Queen Anne's	5,149,407	-1,472,251	-3,471,016	-4,943,267	206,140	-96.0%
St. Mary's	6,973,170	-1,979,073	-4,720,840	-6,699,913	273,257	-96.1%
Somerset	2,957,488	-849,884	-1,959,793	-2,809,677	147,811	-95.0%
Talbot	4,094,971	-1,171,692	-2,801,695	-3,973,387	121,584	-97.0%
Washington	10,683,042	-3,047,889	-7,202,474	-10,250,363	432,679	-95.9%
Wicomico	8,284,887	-2,375,652	-5,523,065	-7,898,717	386,170	-95.3%
Worcester	6,038,794	-1,745,660	-4,158,870	-5,904,530	134,264	-97.8%
<b>Total</b>	<b>\$480,765,004</b>	<b>-\$101,920,000</b>	<b>-\$238,335,996</b>	<b>-\$340,255,996</b>	<b>\$140,509,008</b>	<b>-70.8%</b>

# Highway User Revenue Allocations in Fiscal 2011

<b>County</b>	<b>County Share</b>	<b>Municipal Share</b>	<b>Total Amount</b>	<b>% County</b>	<b>% Municipal</b>
Allegany	\$201,934	\$107,828	\$309,762	65.2%	34.8%
Anne Arundel	549,874	35,573	585,447	93.9%	6.1%
Baltimore City	130,921,506	0	130,921,506	100.0%	0.0%
Baltimore	1,116,215	0	1,116,215	100.0%	0.0%
Calvert	193,437	18,202	211,639	91.4%	8.6%
Caroline	166,454	40,488	206,942	80.4%	19.6%
Carroll	410,223	95,267	505,490	81.2%	18.8%
Cecil	225,748	44,069	269,817	83.7%	16.3%
Charles	301,451	23,207	324,658	92.9%	7.1%
Dorchester	174,403	55,700	230,103	75.8%	24.2%
Frederick	452,383	172,119	624,502	72.4%	27.6%
Garrett	222,370	39,644	262,014	84.9%	15.1%
Harford	489,802	72,372	562,174	87.1%	12.9%
Howard	417,558	0	417,558	100.0%	0.0%
Kent	87,145	21,938	109,083	79.9%	20.1%
Montgomery	742,545	139,814	882,359	84.2%	15.8%
Prince George's	961,773	306,063	1,267,836	75.9%	24.1%
Queen Anne's	192,837	13,303	206,140	93.5%	6.5%
St. Mary's	268,231	5,026	273,257	98.2%	1.8%
Somerset	127,799	20,012	147,811	86.5%	13.5%
Talbot	85,495	36,089	121,584	70.3%	29.7%
Washington	321,913	110,766	432,679	74.4%	25.6%
Wicomico	300,609	85,561	386,170	77.8%	22.2%
Worcester	98,971	35,293	134,264	73.7%	26.3%
<b>Total</b>	<b>\$139,030,676</b>	<b>\$1,478,334</b>	<b>\$140,509,010</b>	<b>98.9%</b>	<b>1.1%</b>

## Change in Highway User Revenues

County	FY 2006	FY 2007	FY 2011	Difference FY 06-11	% Difference FY 06-11
Allegany	\$7,189,208	\$7,438,060	\$309,762	-\$6,879,446	-95.7%
Anne Arundel	30,677,457	31,918,479	585,447	-30,092,010	-98.1%
Baltimore City	224,575,766	226,579,396	130,921,506	-93,654,260	-41.7%
Baltimore	41,406,223	43,239,662	1,116,215	-40,290,008	-97.3%
Calvert	6,224,558	6,537,119	211,639	-6,012,919	-96.6%
Caroline	4,884,733	5,097,930	206,942	-4,677,791	-95.8%
Carroll	13,841,732	14,462,628	505,490	-13,336,242	-96.3%
Cecil	7,634,101	8,012,061	269,817	-7,364,284	-96.5%
Charles	9,559,454	10,206,348	324,658	-9,234,796	-96.6%
Dorchester	5,423,733	5,675,076	230,103	-5,193,630	-95.8%
Frederick	18,130,578	18,961,583	624,502	-17,506,076	-96.6%
Garrett	6,172,193	6,421,992	262,014	-5,910,179	-95.8%
Harford	15,825,031	16,571,417	562,174	-15,262,857	-96.4%
Howard	15,153,795	15,956,386	417,558	-14,736,237	-97.2%
Kent	2,801,547	2,894,425	109,083	-2,692,464	-96.1%
Montgomery	43,452,743	45,276,129	882,359	-42,570,384	-98.0%
Prince George's	37,592,508	39,501,011	1,267,836	-36,324,672	-96.6%
Queen Anne's	5,558,278	5,863,186	206,140	-5,352,138	-96.3%
St. Mary's	7,405,813	7,790,620	273,257	-7,132,556	-96.3%
Somerset	3,253,435	3,399,282	147,811	-3,105,624	-95.5%
Talbot	4,470,556	4,675,038	121,584	-4,348,972	-97.3%
Washington	11,598,049	12,174,332	432,679	-11,165,370	-96.3%
Wicomico	8,843,313	9,295,983	386,170	-8,457,143	-95.6%
Worcester	6,725,031	6,940,174	134,264	-6,590,767	-98.0%
<b>Total</b>	<b>\$538,399,835</b>	<b>\$554,888,317</b>	<b>\$140,509,010</b>	<b>-\$397,890,825</b>	<b>-73.9%</b>

## State Funding under the Foundation Program in Fiscal 2011

County	Enrollment	Foundation Formula	Supplemental Grant	Geographic Cost Index	Total - Foundation	<u>Ranking by Per Pupil Aid</u>
Allegany	8,692	\$42,899,144	\$10,348	\$0	\$42,909,492	1. Baltimore City \$5,339
Anne Arundel	72,915	182,974,646	0	8,785,614	191,760,260	2. Allegany 4,937
Baltimore City	77,909	375,703,158	18,310,935	21,903,960	415,918,053	3. Caroline 4,786
Baltimore	99,514	328,769,056	0	5,329,160	334,098,216	4. Wicomico 4,663
Calvert	16,626	62,700,240	0	2,337,218	65,037,458	5. Somerset 4,504
Caroline	5,224	24,034,783	966,820	0	25,001,603	6. Prince George's 4,388
Carroll	27,418	103,422,728	-117,565	2,569,505	105,874,668	7. Dorchester 4,330
Cecil	15,620	65,109,928	49,059	0	65,158,987	8. Washington 4,222
Charles	25,897	104,211,350	0	3,467,057	107,678,407	9. Cecil 4,172
Dorchester	4,412	17,781,073	1,321,515	0	19,102,588	10. Charles 4,158
Frederick	39,064	146,845,653	0	6,275,826	153,121,479	11. St. Mary's 4,114
Garrett	4,183	13,356,156	1,201,160	0	14,557,316	12. Frederick 3,920
Harford	37,697	146,426,160	-6,103	0	146,420,057	13. Calvert 3,912
Howard	49,635	150,684,289	0	4,983,850	155,668,139	14. Harford 3,884
Kent	2,060	3,373,353	1,003,415	137,896	4,514,664	15. Carroll 3,862
Montgomery	138,139	264,591,855	0	31,439,941	296,031,796	16. Garrett 3,480
Prince George's	120,179	468,275,688	20,505,652	38,614,875	527,396,215	17. Baltimore 3,357
Queen Anne's	7,477	20,245,296	0	550,561	20,795,857	18. Howard 3,136
St. Mary's	16,376	63,900,768	3,251,181	219,242	67,371,191	19. Queen Anne's 2,781
Somerset	2,702	12,170,322	0	0	12,170,322	20. Anne Arundel 2,630
Talbot	4,273	4,290,519	0	0	4,290,519	21. Kent 2,192
Washington	21,383	90,279,588	0	0	90,279,588	22. Montgomery 2,143
Wicomico	14,030	65,419,881	0	0	65,419,881	23. Worcester 1,004
Worcester	6,264	6,289,682	0	0	6,289,682	24. Talbot 1,004
<b>Total</b>	<b>817,688</b>	<b>\$2,763,755,316</b>	<b>\$46,496,417</b>	<b>\$126,614,705</b>	<b>\$2,936,866,438</b>	<b>State Average \$3,592</b>

Source: Department of Legislative Services

# Total State Aid to Public Schools in Fiscal 2011

County	Enrollment	Total State Education Aid	Per Pupil Amount	<u>Ranking by Per Pupil Aid</u>	
Allegany	8,692	\$92,675,839	\$10,662	1.	Baltimore City \$12,219
Anne Arundel	72,915	364,677,007	5,001	2.	Allegany 10,662
Baltimore City	77,909	951,949,187	12,219	3.	Somerset 9,958
Baltimore	99,514	617,164,817	6,202	4.	Wicomico 9,246
Calvert	16,626	103,948,724	6,252	5.	Caroline 9,105
Caroline	5,224	47,566,201	9,105	6.	Prince George's 8,385
Carroll	27,418	166,358,454	6,067	7.	Dorchester 8,178
Cecil	15,620	114,928,440	7,358	8.	Washington 7,626
Charles	25,897	174,790,611	6,750	9.	Cecil 7,358
Dorchester	4,412	36,083,336	8,178	10.	Garrett 6,855
Frederick	39,064	245,529,151	6,285	11.	Charles 6,750
Garrett	4,183	28,673,059	6,855	12.	St. Mary's 6,691
Harford	37,697	244,058,339	6,474	13.	Harford 6,474
Howard	49,635	269,555,911	5,431	14.	Frederick 6,285
Kent	2,060	12,280,233	5,961	15.	Calvert 6,252
Montgomery	138,139	694,316,144	5,026	16.	Baltimore 6,202
Prince George's	120,179	1,007,742,716	8,385	17.	Carroll 6,067
Queen Anne's	7,477	37,781,081	5,053	18.	Kent 5,961
St. Mary's	16,376	109,566,561	6,691	19.	Howard 5,431
Somerset	2,702	26,908,280	9,958	20.	Queen Anne's 5,053
Talbot	4,273	14,973,029	3,504	21.	Montgomery 5,026
Washington	21,383	163,058,216	7,626	22.	Anne Arundel 5,001
Wicomico	14,030	129,725,426	9,246	23.	Worcester 4,169
Worcester	6,264	26,116,299	4,169	24.	Talbot 3,504
Unallocated		27,087,959	33		
<b>Total</b>	<b>817,688</b>	<b>\$5,707,515,020</b>	<b>\$6,980</b>		

Source: Department of Legislative Services

## Direct Aid to Public Schools and Teachers' Retirement Payments in Fiscal 2011

<u>County</u>	<u>Direct Aid</u>	<u>Retirement</u>	<u>Ranking by Per Pupil Direct Aid</u>		<u>Ranking by Per Pupil Retirement</u>			
Allegany	\$83,639,777	\$9,036,062	1.	Baltimore City	\$11,170	1.	Worcester	\$1,288
Anne Arundel	293,083,716	71,593,291	2.	Allegany	9,623	2.	Montgomery	1,230
Baltimore City	870,278,259	81,670,928	3.	Somerset	8,825	3.	Howard	1,202
Baltimore	524,666,524	92,498,293	4.	Wicomico	8,256	4.	Somerset	1,133
Calvert	86,906,274	17,042,450	5.	Caroline	8,167	5.	Kent	1,116
Caroline	42,662,871	4,903,330	6.	Prince George's	7,324	6.	Prince George's	1,061
Carroll	140,703,315	25,655,139	7.	Dorchester	7,202	7.	Baltimore City	1,048
Cecil	100,090,818	14,837,622	8.	Washington	6,758	8.	Allegany	1,040
Charles	150,401,708	24,388,903	9.	Cecil	6,408	9.	Garrett	1,025
Dorchester	31,775,018	4,308,318	10.	Garrett	5,830	10.	Calvert	1,025
Frederick	208,329,304	37,199,847	11.	Charles	5,808	11.	Wicomico	990
Garrett	24,384,920	4,288,139	12.	St. Mary's	5,794	12.	Anne Arundel	982
Harford	209,734,363	34,323,976	13.	Harford	5,564	13.	Dorchester	977
Howard	209,872,621	59,683,290	14.	Frederick	5,333	14.	Frederick	952
Kent	9,980,298	2,299,935	15.	Baltimore	5,272	15.	Cecil	950
Montgomery	524,390,119	169,926,025	16.	Calvert	5,227	16.	Charles	942
Prince George's	880,178,623	127,564,093	17.	Carroll	5,132	17.	Caroline	939
Queen Anne's	31,190,107	6,590,974	18.	Kent	4,845	18.	Carroll	936
St. Mary's	94,881,663	14,684,898	19.	Howard	4,228	19.	Baltimore	930
Somerset	23,846,658	3,061,622	20.	Queen Anne's	4,171	20.	Harford	911
Talbot	11,216,281	3,756,748	21.	Anne Arundel	4,020	21.	St. Mary's	897
Washington	144,499,142	18,559,074	22.	Montgomery	3,796	22.	Queen Anne's	881
Wicomico	115,832,093	13,893,333	23.	Worcester	2,881	23.	Talbot	879
Worcester	18,046,486	8,069,813	24.	Talbot	2,625	24.	Washington	868
Unallocated	27,087,959	0						
<b>Total</b>	<b>\$4,857,678,917</b>	<b>\$849,836,103</b>		<b>Statewide</b>	<b>\$5,941</b>		<b>Statewide</b>	<b>\$1,039</b>

Source: Department of Legislative Services

## Comparison of Wealth Per Pupil for State Education Aid Programs Fiscal 2010 and 2011

County	Fiscal 2010	Fiscal 2011	Percent Difference	<u>Per Pupil Wealth</u>		<u>Growth in Per Pupil Wealth</u>	
Allegany	\$253,632	\$272,517	7.4%	1. Worcester	\$1,371,358	1. Prince George's	9.5%
Anne Arundel	637,553	648,477	1.7%	2. Talbot	1,142,003	2. Garrett	7.8%
Baltimore City	271,978	290,050	6.6%	3. Kent	783,593	3. Allegany	7.4%
Baltimore	510,690	525,383	2.9%	4. Montgomery	740,535	4. Baltimore City	6.6%
Calvert	430,558	452,950	5.2%	5. Anne Arundel	648,477	5. Caroline	6.0%
Caroline	306,092	324,375	6.0%	6. Queen Anne's	617,757	6. Kent	5.7%
Carroll	430,314	452,808	5.2%	7. Howard	566,901	7. Carroll	5.2%
Cecil	380,218	391,395	2.9%	8. Garrett	542,523	8. Calvert	5.2%
Charles	393,971	413,751	5.0%	9. Baltimore	525,383	9. Queen Anne's	5.1%
Dorchester	404,611	412,813	2.0%	10. Frederick	454,814	10. Charles	5.0%
Frederick	440,905	454,814	3.2%	11. Calvert	452,950	11. St. Mary's	4.7%
Garrett	503,446	542,523	7.8%	12. Carroll	452,808	12. Harford	4.7%
Harford	415,952	435,418	4.7%	13. Harford	435,418	13. Talbot	4.6%
Howard	563,647	566,901	0.6%	14. Prince George's	433,527	14. Somerset	4.0%
Kent	741,355	783,593	5.7%	15. St. Mary's	432,658	15. Frederick	3.2%
Montgomery	764,044	740,535	-3.1%	16. Charles	413,751	16. Cecil	2.9%
Prince George's	396,069	433,527	9.5%	17. Dorchester	412,813	17. Washington	2.9%
Queen Anne's	587,774	617,757	5.1%	18. Cecil	391,395	18. Baltimore	2.9%
St. Mary's	413,282	432,658	4.7%	19. Washington	383,087	19. Dorchester	2.0%
Somerset	326,279	339,417	4.0%	20. Somerset	339,417	20. Wicomico	2.0%
Talbot	1,091,275	1,142,003	4.6%	21. Caroline	324,375	21. Anne Arundel	1.7%
Washington	372,185	383,087	2.9%	22. Wicomico	314,764	22. Howard	0.6%
Wicomico	308,652	314,764	2.0%	23. Baltimore City	290,050	23. Montgomery	-3.1%
Worcester	1,449,183	1,371,358	-5.4%	24. Allegany	272,517	24. Worcester	-5.4%
<b>Total</b>	<b>\$506,438</b>	<b>\$518,684</b>	<b>2.4%</b>	<b>Statewide</b>	<b>\$518,684</b>	<b>Statewide</b>	<b>2.4%</b>

## Many School Systems Experiencing Decline in FTE Student Enrollment

### September 2008 (Fiscal 2010) and September 2009 (Fiscal 2011)

County	Fiscal 2010	Fiscal 2011	Percent Difference	<u>FTES Enrollment Growth</u>	Percent Change FTES Enrollment		
Allegany	8,757	8,692	-0.7%	1. Montgomery	2,169	1. St. Mary's	2.5%
Anne Arundel	71,834	72,915	1.5%	2. Anne Arundel	1,081	2. Dorchester	2.1%
Baltimore City	77,871	77,909	0.0%	3. Howard	803	3. Howard	1.6%
Baltimore	99,294	99,514	0.2%	4. St. Mary's	395	4. Montgomery	1.6%
Calvert	16,662	16,626	-0.2%	5. Baltimore	220	5. Anne Arundel	1.5%
Caroline	5,253	5,224	-0.6%	6. Washington	145	6. Washington	0.7%
Carroll	27,629	27,418	-0.8%	7. Dorchester	90	7. Talbot	0.3%
Cecil	15,628	15,620	-0.1%	8. Baltimore City	38	8. Baltimore	0.2%
Charles	25,861	25,897	0.1%	9. Charles	36	9. Charles	0.1%
Dorchester	4,322	4,412	2.1%	10. Harford	27	10. Wicomico	0.1%
Frederick	39,089	39,064	-0.1%	11. Wicomico	17	11. Harford	0.1%
Garrett	4,291	4,183	-2.5%	12. Talbot	14	12. Baltimore City	0.0%
Harford	37,670	37,697	0.1%	13. Cecil	-8	13. Cecil	-0.1%
Howard	48,832	49,635	1.6%	14. Somerset	-12	14. Frederick	-0.1%
Kent	2,081	2,060	-1.0%	15. Kent	-21	15. Calvert	-0.2%
Montgomery	135,970	138,139	1.6%	16. Frederick	-25	16. Somerset	-0.4%
Prince George's	121,525	120,179	-1.1%	17. Caroline	-29	17. Queen Anne's	-0.5%
Queen Anne's	7,517	7,477	-0.5%	18. Calvert	-36	18. Caroline	-0.6%
St. Mary's	15,982	16,376	2.5%	19. Queen Anne's	-40	19. Allegany	-0.7%
Somerset	2,714	2,702	-0.4%	20. Worcester	-54	20. Carroll	-0.8%
Talbot	4,259	4,273	0.3%	21. Allegany	-65	21. Worcester	-0.9%
Washington	21,238	21,383	0.7%	22. Garrett	-108	22. Kent	-1.0%
Wicomico	14,013	14,030	0.1%	23. Carroll	-211	23. Prince George's	-1.1%
Worcester	6,318	6,264	-0.9%	24. Prince George's	-1,347	24. Garrett	-2.5%
<b>Total</b>	<b>814,609</b>	<b>817,688</b>	<b>0.4%</b>	<b>Statewide</b>	<b>3,079</b>	<b>Statewide</b>	<b>0.4%</b>

## Students Approved for Free and Reduced Priced Meals Fiscal 2010 and 2011

County	Fiscal 2010	Fiscal 2011	Percent Difference	FRPM Count as Percent of Total Enrollment	Change in FRPM Count		
Allegany	4,225	4,296	1.7%	1. Baltimore City	84.0%	1. Queen Anne's	22.6%
Anne Arundel	16,004	18,498	15.6%	2. Somerset	64.4%	2. Baltimore City	18.1%
Baltimore City	55,595	65,682	18.1%	3. Dorchester	54.8%	3. Calvert	16.4%
Baltimore	36,118	39,054	8.1%	4. Prince George's	51.1%	4. Anne Arundel	15.6%
Calvert	2,588	3,013	16.4%	5. Caroline	50.4%	5. Howard	14.7%
Caroline	2,427	2,631	8.4%	6. Allegany	49.4%	6. Cecil	14.6%
Carroll	3,381	3,829	13.3%	7. Garrett	46.5%	7. Frederick	13.7%
Cecil	4,760	5,455	14.6%	8. Wicomico	45.7%	8. Carroll	13.3%
Charles	6,310	6,844	8.5%	9. Kent	44.5%	9. Dorchester	13.2%
Dorchester	2,137	2,419	13.2%	10. Washington	42.1%	10. Harford	12.5%
Frederick	6,948	7,902	13.7%	11. Worcester	39.5%	11. Worcester	10.7%
Garrett	1,852	1,947	5.1%	12. Baltimore	39.1%	12. Montgomery	10.7%
Harford	8,413	9,464	12.5%	13. Cecil	34.9%	13. Prince George's	10.2%
Howard	6,231	7,149	14.7%	14. Talbot	33.1%	14. St. Mary's	9.7%
Kent	839	917	9.3%	15. Montgomery	28.0%	15. Kent	9.3%
Montgomery	35,031	38,762	10.7%	16. Charles	26.4%	16. Talbot	8.9%
Prince George's	55,970	61,663	10.2%	17. St. Mary's	25.8%	17. Charles	8.5%
Queen Anne's	1,244	1,525	22.6%	18. Anne Arundel	25.3%	18. Caroline	8.4%
St. Mary's	3,861	4,235	9.7%	19. Harford	25.1%	19. Baltimore	8.1%
Somerset	1,634	1,743	6.7%	20. Queen Anne's	20.3%	20. Somerset	6.7%
Talbot	1,298	1,414	8.9%	21. Frederick	20.2%	21. Garrett	5.1%
Washington	8,642	9,019	4.4%	22. Calvert	18.1%	22. Washington	4.4%
Wicomico	7,046	6,665	-5.4%	23. Howard	14.4%	23. Allegany	1.7%
Worcester	2,240	2,480	10.7%	24. Carroll	14.0%	24. Wicomico	-5.4%
<b>Total</b>	<b>274,794</b>	<b>306,606</b>	<b>11.6%</b>	<b>Statewide</b>	<b>37.4%</b>	<b>Statewide</b>	<b>11.6%</b>

FRPM = Free and Reduced Priced Meals

## Students Receiving Special Education Services Fiscal 2010 and 2011

County	Fiscal 2010	Fiscal 2011	Percent Difference	Special Education Students as Percent of Total Enrollment	Change in Special Education Students		
Allegany	1,342	1,336	-0.4%	1. Baltimore City	17.8%	1. Worcester	7.4%
Anne Arundel	8,010	7,815	-2.4%	2. Kent	16.2%	2. Queen Anne's	5.8%
Baltimore City	13,906	13,894	-0.1%	3. Allegany	15.4%	3. Somerset	3.8%
Baltimore	13,324	13,322	0.0%	4. Somerset	15.0%	4. Charles	1.9%
Calvert	1,870	1,769	-5.4%	5. Harford	14.0%	5. Caroline	1.3%
Caroline	549	556	1.3%	6. Cecil	13.6%	6. Talbot	1.1%
Carroll	3,284	3,300	0.5%	7. Baltimore	13.4%	7. Montgomery	0.7%
Cecil	2,149	2,127	-1.0%	8. Queen Anne's	12.8%	8. Carroll	0.5%
Charles	2,314	2,358	1.9%	9. Garrett	12.8%	9. Baltimore	0.0%
Dorchester	488	450	-7.8%	10. Carroll	12.0%	10. Baltimore City	-0.1%
Frederick	4,648	4,436	-4.6%	11. Montgomery	12.0%	11. Allegany	-0.4%
Garrett	579	536	-7.4%	12. Prince George's	11.9%	12. Cecil	-1.0%
Harford	5,353	5,270	-1.6%	13. St. Mary's	11.7%	13. Harford	-1.6%
Howard	4,503	4,323	-4.0%	14. Wicomico	11.6%	14. Prince George's	-1.8%
Kent	343	334	-2.6%	15. Washington	11.6%	15. Wicomico	-1.8%
Montgomery	16,486	16,600	0.7%	16. Worcester	11.4%	16. Anne Arundel	-2.4%
Prince George's	14,655	14,392	-1.8%	17. Frederick	11.3%	17. Kent	-2.6%
Queen Anne's	911	964	5.8%	18. Anne Arundel	10.7%	18. Howard	-4.0%
St. Mary's	2,138	1,927	-9.9%	19. Caroline	10.6%	19. Frederick	-4.6%
Somerset	391	406	3.8%	20. Calvert	10.6%	20. Washington	-4.8%
Talbot	365	369	1.1%	21. Dorchester	10.2%	21. Calvert	-5.4%
Washington	2,599	2,475	-4.8%	22. Charles	9.1%	22. Garrett	-7.4%
Wicomico	1,722	1,691	-1.8%	23. Howard	8.7%	23. Dorchester	-7.8%
Worcester	664	713	7.4%	24. Talbot	8.6%	24. St. Mary's	-9.9%
<b>Total</b>	<b>102,593</b>	<b>101,363</b>	<b>-1.2%</b>	<b>Statewide</b>	<b>12.4%</b>	<b>Statewide</b>	<b>-1.2%</b>

## Students Identified as Limited English Proficient Fiscal 2010 and 2011

County	Fiscal 2010	Fiscal 2011	Percent Difference	<u>LEP Students as Percent of Total Enrollment</u>		<u>Change in LEP Students</u>	
Allegany	22	26	18.2%	1. Montgomery	11.7%	1. Garrett	33.3%
Anne Arundel	2,015	2,170	7.7%	2. Prince George's	10.5%	2. St. Mary's	18.9%
Baltimore City	1,698	1,539	-9.4%	3. Howard	4.1%	3. Allegany	18.2%
Baltimore	3,318	3,001	-9.6%	4. Talbot	4.0%	4. Anne Arundel	7.7%
Calvert	193	201	4.1%	5. Somerset	3.8%	5. Howard	7.1%
Caroline	154	163	5.8%	6. Caroline	3.1%	6. Caroline	5.8%
Carroll	173	154	-11.0%	7. Frederick	3.1%	7. Calvert	4.1%
Cecil	122	108	-11.5%	8. Baltimore	3.0%	8. Harford	1.9%
Charles	190	161	-15.3%	9. Anne Arundel	3.0%	9. Dorchester	1.5%
Dorchester	65	66	1.5%	10. Worcester	2.7%	10. Prince George's	0.2%
Frederick	1,346	1,214	-9.8%	11. Kent	2.7%	11. Montgomery	-3.1%
Garrett	3	4	33.3%	12. Wicomico	2.2%	12. Wicomico	-4.5%
Harford	476	485	1.9%	13. Baltimore City	2.0%	13. Washington	-6.2%
Howard	1,900	2,034	7.1%	14. Washington	1.8%	14. Baltimore City	-9.4%
Kent	65	55	-15.4%	15. Queen Anne's	1.6%	15. Baltimore	-9.6%
Montgomery	16,646	16,129	-3.1%	16. Dorchester	1.5%	16. Frederick	-9.8%
Prince George's	12,626	12,649	0.2%	17. Harford	1.3%	17. Carroll	-11.0%
Queen Anne's	138	122	-11.6%	18. Calvert	1.2%	18. Talbot	-11.4%
St. Mary's	122	145	18.9%	19. St. Mary's	0.9%	19. Cecil	-11.5%
Somerset	123	103	-16.3%	20. Cecil	0.7%	20. Worcester	-11.6%
Talbot	193	171	-11.4%	21. Charles	0.6%	21. Queen Anne's	-11.6%
Washington	417	391	-6.2%	22. Carroll	0.6%	22. Charles	-15.3%
Wicomico	337	322	-4.5%	23. Allegany	0.3%	23. Kent	-15.4%
Worcester	190	168	-11.6%	24. Garrett	0.1%	24. Somerset	-16.3%
<b>Total</b>	<b>42,532</b>	<b>41,581</b>	<b>-2.2%</b>	<b>Statewide</b>	<b>5.1%</b>	<b>Statewide</b>	<b>-2.2%</b>

LEP = Limited English Proficient

# Racial Composition in Maryland Public Schools

September 2008

County	White	African American	Hispanic/Latino	Asian	Native American	Percent Minority
Allegany	92.3%	5.6%	0.7%	0.9%	0.5%	1. Prince George's 95.3%
Anne Arundel	66.1%	22.9%	6.6%	4.0%	0.4%	2. Baltimore City 92.2%
Baltimore City	7.8%	88.4%	2.8%	0.7%	0.3%	3. Charles 61.0%
Baltimore	48.7%	40.4%	4.7%	5.8%	0.5%	4. Montgomery 61.0%
Calvert	78.1%	16.9%	2.4%	2.0%	0.6%	5. Somerset 52.0%
Caroline	73.8%	18.5%	6.5%	0.8%	0.4%	6. Baltimore 51.4%
Carroll	91.2%	4.0%	2.4%	1.9%	0.4%	7. Wicomico 45.6%
Cecil	84.9%	10.1%	3.4%	1.2%	0.4%	8. Dorchester 45.0%
Charles	39.0%	53.3%	3.6%	3.3%	0.8%	9. Howard 42.7%
Dorchester	55.0%	39.1%	4.2%	1.3%	0.4%	10. Anne Arundel 33.9%
Frederick	74.3%	12.3%	8.2%	4.8%	0.4%	11. Kent 30.0%
Garrett	98.8%	0.5%	0.3%	0.3%	0.1%	12. Talbot 29.7%
Harford	72.5%	20.2%	3.7%	3.1%	0.6%	13. Worcester 29.6%
Howard	57.3%	21.3%	5.5%	15.6%	0.3%	14. St. Mary's 27.8%
Kent	69.9%	23.7%	5.2%	0.7%	0.4%	15. Harford 27.6%
Montgomery	39.1%	23.1%	22.1%	15.5%	0.3%	16. Caroline 26.2%
Prince George's	4.7%	73.4%	18.5%	3.0%	0.4%	17. Frederick 25.7%
Queen Anne's	87.0%	8.2%	2.9%	1.5%	0.4%	18. Calvert 21.9%
St. Mary's	72.2%	21.0%	3.3%	2.9%	0.6%	19. Washington 20.0%
Somerset	48.0%	45.1%	5.9%	0.9%	0.1%	20. Cecil 15.1%
Talbot	70.3%	20.7%	6.9%	1.9%	0.2%	21. Queen Anne's 13.0%
Washington	79.9%	13.5%	4.4%	1.9%	0.2%	22. Carroll 8.7%
Wicomico	54.5%	36.8%	5.1%	3.5%	0.2%	23. Allegany 7.7%
Worcester	70.4%	23.3%	3.9%	1.9%	0.5%	24. Garrett 1.2%
<b>Maryland</b>	<b>46.2%</b>	<b>38.0%</b>	<b>9.5%</b>	<b>5.9%</b>	<b>0.4%</b>	<b>Statewide 53.8%</b>

Source: Maryland State Department of Education

# Local Government Expenditures by Category

## Fiscal 2007

Category	Total Local Expenditures	Percent of Total	County Expenditures	Municipal Expenditures	Percent County	Percent Municipal
General Government	\$1,555,012,189	6.2%	\$1,410,712,255	\$144,299,934	90.7%	9.3%
Public Safety						
Police	1,417,964,717	5.7%	1,233,099,171	184,865,546	87.0%	13.0%
Fire	810,477,316	3.2%	765,700,139	44,777,177	94.5%	5.5%
Corrections	315,308,588	1.3%	315,308,588	-	100.0%	0.0%
Other Public Safety	285,555,144	1.1%	259,821,532	25,733,612	91.0%	9.0%
Public Works						
Transportation	1,197,918,527	4.8%	1,042,392,993	155,525,534	87.0%	13.0%
Water/Sewer Services	1,880,783,265	7.5%	1,621,887,646	258,895,619	86.2%	13.8%
Other Public Works	100,010,614	0.4%	6,310,173	93,700,441	6.3%	93.7%
Education						
Public Schools	11,392,110,108	45.5%	11,392,110,108	-	100.0%	0.0%
Community Colleges	942,415,362	3.8%	942,415,362	-	100.0%	0.0%
Libraries	270,884,093	1.1%	270,884,093	-	100.0%	0.0%
Health/Social Services	958,419,754	3.8%	958,419,754	-	100.0%	0.0%
Parks and Recreation	698,587,156	2.8%	600,358,721	98,228,435	85.9%	14.1%
Community/Economic Development	720,143,440	2.9%	664,631,851	55,511,589	92.3%	7.7%
Miscellaneous	1,064,059,427	4.2%	1,015,951,837	48,107,590	95.5%	4.5%
Debt Service	1,438,200,251	5.7%	1,370,014,077	68,186,174	95.3%	4.7%
<b>Total</b>	<b>\$25,047,849,951</b>	<b>100.0%</b>	<b>\$23,870,018,300</b>	<b>\$1,177,831,651</b>	<b>95.3%</b>	<b>4.7%</b>

Source: *Local Government Finances Fiscal 2007*, Department of Legislative Services

## Local Government Expenditures

### Fiscal 2007

County	County (\$ in Millions)	Municipal (\$ in Millions)	Total (\$ in Millions)	Percent County	Percent Municipal
Allegany	\$265.0	\$50.0	\$315.0	84.1%	15.9%
Anne Arundel	1,875.7	74.8	1,950.5	96.2%	3.8%
Baltimore City	3,287.5	0.0	3,287.5	100.0%	0.0%
Baltimore	2,913.6	0.0	2,913.6	100.0%	0.0%
Calvert	347.3	8.9	356.2	97.5%	2.5%
Caroline	121.7	16.8	138.5	87.9%	12.1%
Carroll	567.5	51.2	618.7	91.7%	8.3%
Cecil	340.0	29.1	369.1	92.1%	7.9%
Charles	649.3	12.7	662.0	98.1%	1.9%
Dorchester	111.9	32.0	143.9	77.8%	22.2%
Frederick	838.6	116.9	955.6	87.8%	12.2%
Garrett	125.8	7.0	132.8	94.7%	5.3%
Harford	892.2	47.0	939.1	95.0%	5.0%
Howard	1,313.8	0.0	1,313.8	100.0%	0.0%
Kent	70.7	8.2	78.9	89.6%	10.4%
Montgomery	5,015.6	174.0	5,189.6	96.6%	3.4%
Prince George's	3,484.4	159.5	3,644.0	95.6%	4.4%
Queen Anne's	192.0	7.8	199.8	96.1%	3.9%
St. Mary's	327.4	5.8	333.2	98.3%	1.7%
Somerset	86.9	7.5	94.4	92.0%	8.0%
Talbot	111.5	81.0	192.6	57.9%	42.1%
Washington	398.5	108.1	506.6	78.7%	21.3%
Wicomico	312.9	56.3	369.2	84.8%	15.2%
Worcester	220.1	123.2	343.4	64.1%	35.9%
<b>Statewide</b>	<b>\$23,870.0</b>	<b>\$1,177.8</b>	<b>\$25,047.8</b>	<b>95.3%</b>	<b>4.7%</b>

Source: *Local Government Finances Fiscal 2007*, Department of Legislative Services